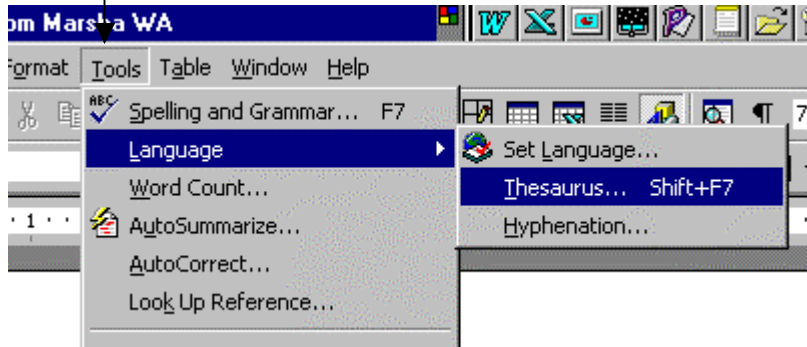


## Using the Thesaurus in Microsoft Word

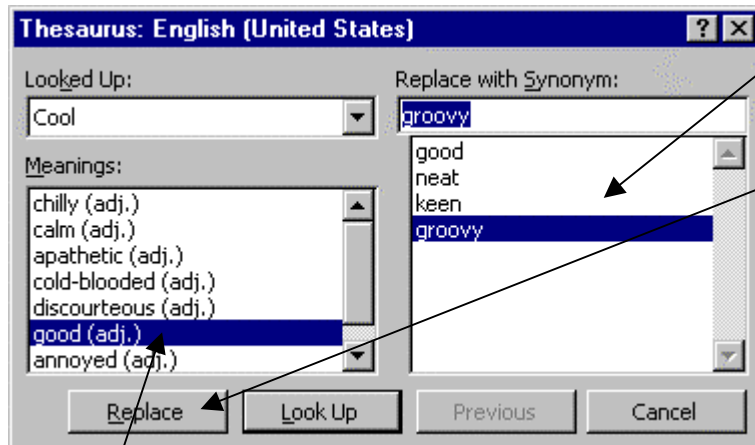
Microsoft Word has a thesaurus that is easy to use.

Click on any word that you want to replace.

Click on Tools. Move the cursor to Language, and over to Thesaurus.



Now you will see this screen.



The word that is highlighted in the screen on the right will replace the word in your text when you click on the Replace button

To see more choices, click on any word in the "Meanings" box.